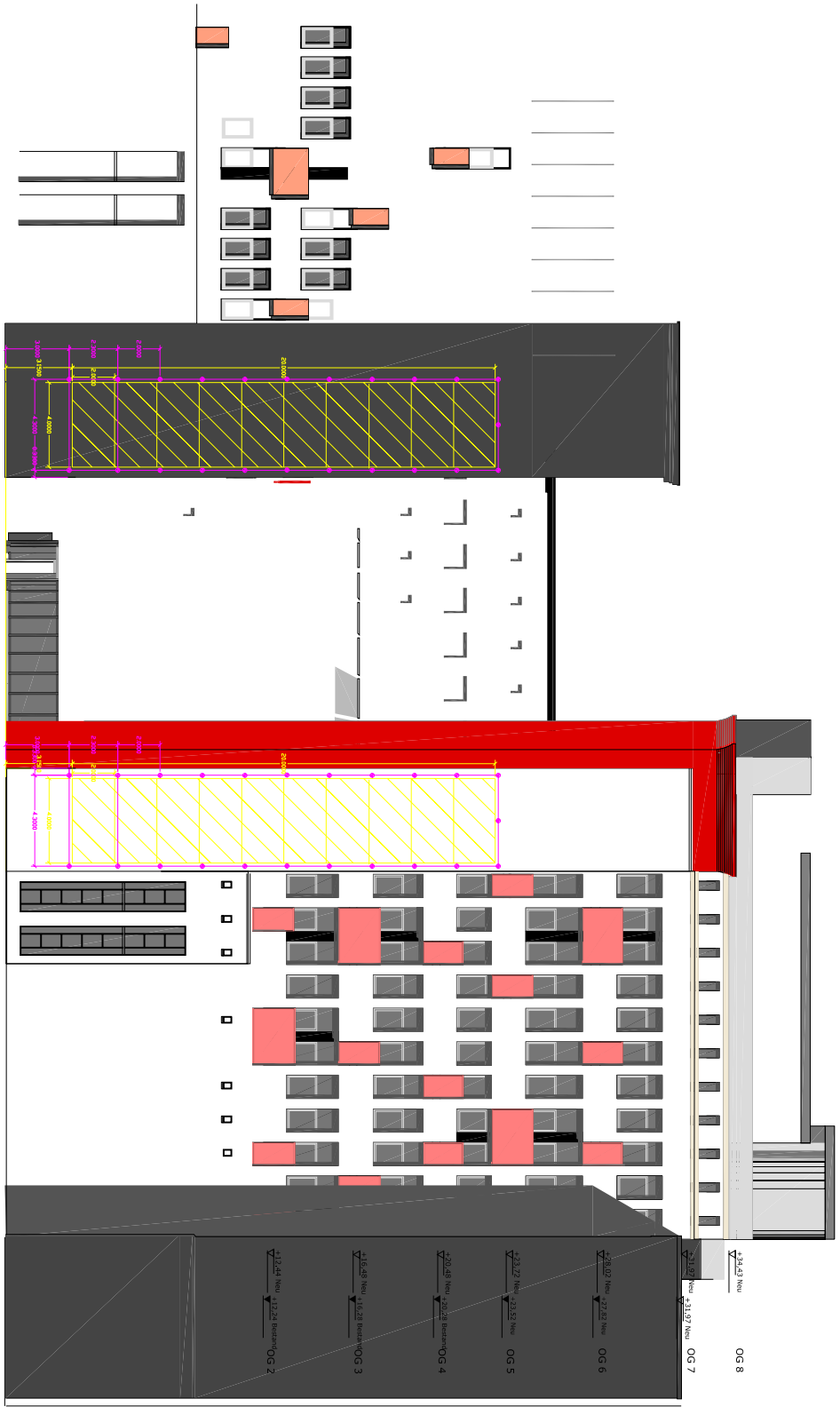


Banner surfaces - One Sheet

Description	2 banner surfaces with system installation on the west facades of building parts C and F. Height up to 20 m, width 4 m, for mounting of one each vertical banner. Facade background: RAL 7016.	
Banner formats	Variant 1: 4 x 4 m Variant 2: 4 x 6 m Variant 3: 4 x 8 m Variant 4: 4 x 10 m Variant 5: 4 x 12 m	Variant 6: 4 x 14 m Variant 7: 4 x 16 m Variant 8: 4 x 18 m Variant 9: 4 x 20 m
Features	The standard type is provided with a robust circumferential strap with dia. 2 cm eyes every 50 cm.	
Mounting	By ewerk GmbH together with rope climbers of our contractual partner.	
Photo		
Technical drawing	See page 2	
Production	We urgently recommend production through our contractual partner, including the preparation of copies based on your digital data to be provided as Photoshop PDF or EPS files (scale 1:1) with a resolution of 150 dpi for up to 5 m ² , 45 dpi for up to 25 m ² , 40 dpi for up to 50 m ² and 30 dpi for more than 50 m ² .	
Contact	Katajun Fakhoury, Event Manager Katajun.Fakhoury@ewerk.net , Tel: +49 30 200756 15	
Further information	www.ewerk.net	



434.43 Neu OG 8

433.97 Neu OG 7

432.22 Neu OG 6

431.52 Neu OG 5

429.28 Neu OG 4

412.28 Neu OG 3

412.28 Neu OG 2

eWerk GmbH
 Banner-Flächen Westfassade
 Var 1
 20060503

Fassadenentwicklung BT_C/D/E/F